



Cotone blu/
Blue cotton



Cotone militare/
Military cotton



Cotone piombo/
Lead cotton



Cotone castoro/
Beaver cotton



Cotone cioccolato/
Chocolate cotton



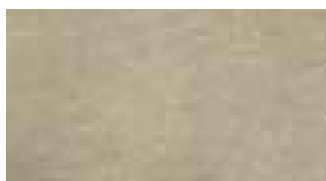
Lino talpa/
Mole linen



Lino acqua/
Acqua linen



Lino lime/
Lime linen



Tramè beige/
Tramè beige



Tramè tortora/
Tramè dove gray



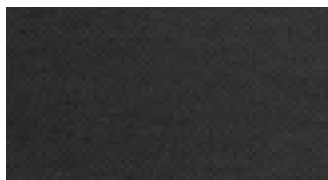
Tramè arancio/
Tramè orange



Tramè pistacchio/
Tramè pistachio



Tramè blu elettrico/
Tramè electric blue



Tramè antracite/
Tramè anthracite



Tramè nero/
Tramè black